

# AmericanChef

2024 Catalogue

**Premium Equipment**  
for Every Chef's Needs

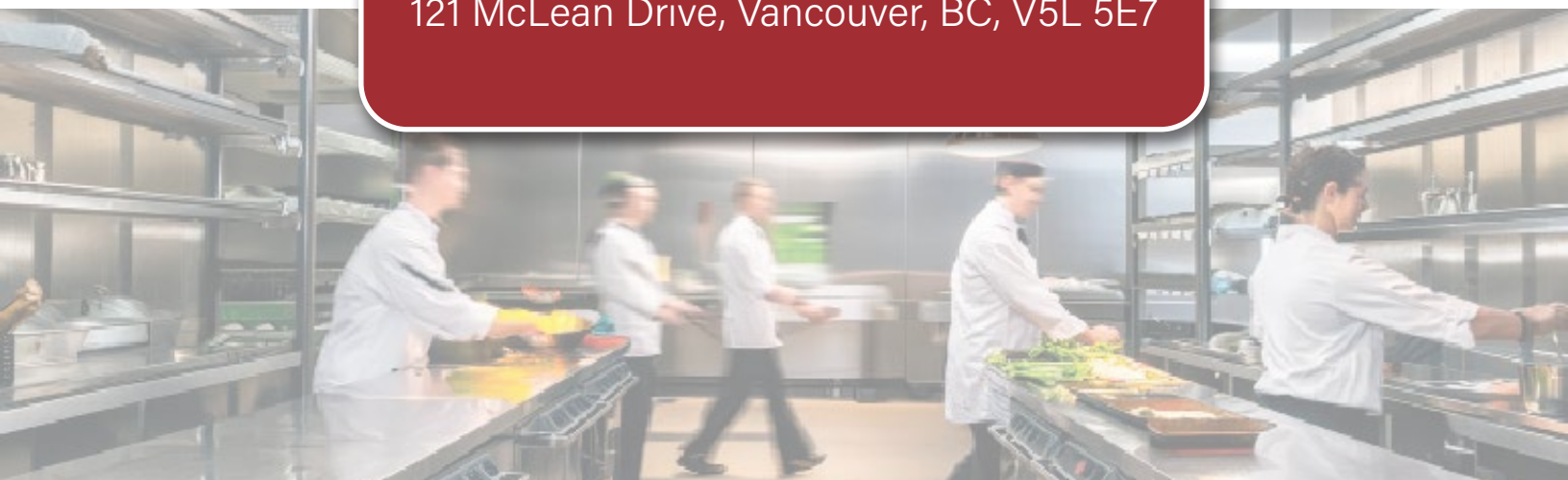
**Product Catalogue**



**AmericanChef**

**[www.americanchef.ca](http://www.americanchef.ca)**

121 McLean Drive, Vancouver, BC, V5L 5E7



1-866-450-CHEF

[www.americanchef.ca](http://www.americanchef.ca)

[info@americanchef.ca](mailto:info@americanchef.ca)



## Table of Contents

**AmericanChef**

**Draft Beer Coolers ..... 4**

**Back Bar Coolers ..... 5**

**Display Cases ..... 6-7**

**Chest Freezers ..... 8-9**

**Refrigerated Prep Tables ..... 10-12**

**Glass Reach-In Freezers & Coolers ..... 13-14**

**Reach-In Freezers & Coolers ..... 15**

**Under Counter Freezers & Coolers ..... 16-17**

**Mixers ..... 18**

**Warranty & About American Chef ..... 19-20**



### Draft Beer Cooler 72"

Model Number	Dimensions(W"xD"xH")
BBDD3-72B	73 1/16 x 24 7/16 x 51
Capacity	Voltage
3 Half Barrels	115V/60Hz
Temperature	Plug Type
33~41°F	Nema 5-15P
Refrigerant	Warranty (Years)
R290	2 Year & 5 Compressor



### Draft Beer Cooler 30"

Model Number	Dimensions(W"xD"xH")
BBDD1-30B	29 15/16 x 24 1/8 x 51 1/8
Capacity	Voltage
1 Keg	115V/60Hz
Temperature	Plug Type
33~41°F	Nema 5-15P
Refrigerant	Warranty (Years)
R290	2 Year & 5 Compressor



### Draft Beer Cooler 49"

Model Number	Dimensions(W"xD"xH")
BBDD2-49B	49 1/8 x 24 7/16 x 51
Capacity	Voltage
2 Half Barrels	115V/60Hz
Temperature	Plug Type
33~41°F	Nema 5-15P
Refrigerant	Warranty (Years)
R290	2 Year & 5 Compressor



### Draft Beer Cooler 61"

Model Number	Dimensions(W"xD"xH")
BBDD2-61B	61 1/16 x 24 7/16 x 51
Capacity	Voltage
2 Half Barrels	115V/60Hz
Temperature	Plug Type
33~41°F	Nema 5-15P
Refrigerant	Warranty (Years)
R290	2 Year & 5 Compressor



## Back Bar Coolers

# AmericanChef



**Back Bar Cooler 59"**

Model Number	Dimensions(W"xD"xH")
BB2-59G	58 3/4 x 27 5/8 x 42 1/2
Capacity	Voltage
20 Cubic ft.	115V/60Hz
Temperature	Plug Type
33~41°F	Nema 5-15P
Refrigerant	Warranty (Years)
R290	2 Year & 5 Compressor



**Back Bar Cooler 69"**

Model Number	Dimensions(W"xD"xH")
BB2-69G	69 x 27 5/8 x 42 1/2
Capacity	Voltage
24 Cubic ft.	115V/60Hz
Temperature	Plug Type
33~41°F	Nema 5-15P
Refrigerant	Warranty (Years)
R290	2 Year & 5 Compressor



**Back Bar Cooler 90"**

Model Number	Dimensions(W"xD"xH")
BB3-90G	90 3/8 x 27 5/8 x 42 1/2
Capacity	Voltage
32 Cubic ft.	115V/60Hz
Temperature	Plug Type
33~41°F	Nema 5-15P
Refrigerant	Warranty (Years)
R290	2 Year & 5 Compressor



**Back Bar Cooler 59"**

Model Number	Dimensions(W"xD"xH")
BB2-59G	58 3/4 x 27 5/8 x 42 1/2
Capacity	Voltage
20 Cubic ft.	115V/60Hz
Temperature	Plug Type
33~41°F	Nema 5-15P
Refrigerant	Warranty (Years)
R290	2 Year & 5 Compressor



**Back Bar Cooler 69"**

Model Number	Dimensions(W"xD"xH")
BB2-69G	69 x 27 5/8 x 42 1/2
Capacity	Voltage
24 Cubic ft.	115V/60Hz
Temperature	Plug Type
33~41°F	Nema 5-15P
Refrigerant	Warranty (Years)
R290	2 Year & 5 Compressor



**Back Bar Cooler 90"**

Model Number	Dimensions(W"xD"xH")
BB3-90G	90 3/8 x 27 5/8 x 42 1/2
Capacity	Voltage
32 Cubic ft.	115V/60Hz
Temperature	Plug Type
33~41°F	Nema 5-15P
Refrigerant	Warranty (Years)
R290	2 Year & 5 Compressor



**Curved Display Case 36"**

Model Number	Dimensions(W"xD"xH")
DS35	35 3/8 x 31 1/2 x 53 1/2
Shelves	Voltage
3 Shelves	115V/60Hz
Temperature	Plug Type
39~45°F	Nema 5-15P
Refrigerant	Warranty (Years)
R290	2 Year & 5 Compressor



**Curved Display Case 48"**

Model Number	Dimensions(W"xD"xH")
DS48	47 3/16 x 31 1/2 x 53 1/2
Shelves	Voltage
3 Shelves	115V/60Hz
Temperature	Plug Type
39~45°F	Nema 5-15P
Refrigerant	Warranty (Years)
R290	2 Year & 5 Compressor



**Curved Display Case 60"**

Model Number	Dimensions(W"xD"xH")
DS60	59 1/8 x 31 1/2 x 53 1/2
Shelves	Voltage
3 Shelves	115V/60Hz
Temperature	Plug Type
39~45°F	Nema 5-15P
Refrigerant	Warranty (Years)
R290	2 Year & 5 Compressor



**Curved Display Case 72"**

Model Number	Dimensions(W"xD"xH")
DS72	70 7/8 x 31 1/2 x 53 9/16
Shelves	Voltage
3 Shelves	115V/60Hz
Temperature	Plug Type
39~45°F	Nema 5-15P
Refrigerant	Warranty (Years)
R290	2 Year & 5 Compressor



**Curved Display Case 80"**

Model Number	Dimensions(W"xD"xH")
DS80	78 3/4 x 31 1/2 x 53 9/16
Shelves	Voltage
3 Shelves	115V/60Hz
Temperature	Plug Type
39~45°F	Nema 5-15P
Refrigerant	Warranty (Years)
R290	2 Year & 5 Compressor



**Curved Display Case 94"**

Model Number	Dimensions(W"xD"xH")
DS94	94 1/2 x 31 1/2 x 53 9/16
Shelves	Voltage
3 Shelves	115V/60Hz
Temperature	Plug Type
39~45°F	Nema 5-15P
Refrigerant	Warranty (Years)
R290	2 Year & 5 Compressor



## Squared Display Cases

**AmericanChef**



**Squared Display Case 36"**

Model Number	Dimensions(W"xD"xH")
DSF35	35 3/8 x 31 1/2 x 53 1/2
Shelves	Voltage
3 Shelves	115V/60Hz
Temperature	Plug Type
39~45°F	Nema 5-15P
Refrigerant	Warranty (Years)
R290	2 Year & 5 Compressor



**Squared Display Case 48"**

Model Number	Dimensions(W"xD"xH")
DSF48	47 3/16 x 31 1/2 x 53 1/2
Shelves	Voltage
3 Shelves	115V/60Hz
Temperature	Plug Type
39~45°F	Nema 5-15P
Refrigerant	Warranty (Years)
R290	2 Year & 5 Compressor



**Squared Display Case 60"**

Model Number	Dimensions(W"xD"xH")
DSF60	59 1/8 x 31 1/2 x 53 1/2
Shelves	Voltage
3 Shelves	115V/60Hz
Temperature	Plug Type
39~45°F	Nema 5-15P
Refrigerant	Warranty (Years)
R290	2 Year & 5 Compressor



**Squared Display Case 72"**

Model Number	Dimensions(W"xD"xH")
DSF72	70 7/8 x 31 1/2 x 53 9/16
Shelves	Voltage
3 Shelves	115V/60Hz
Temperature	Plug Type
39~45°F	Nema 5-15P
Refrigerant	Warranty (Years)
R290	2 Year & 5 Compressor



**Squared Display Case 80"**

Model Number	Dimensions(W"xD"xH")
DSF80	78 3/4 x 31 1/2 x 53 9/16
Shelves	Voltage
3 Shelves	115V/60Hz
Temperature	Plug Type
39~45°F	Nema 5-15P
Refrigerant	Warranty (Years)
R290	2 Year & 5 Compressor



**Squared Display Case 94"**

Model Number	Dimensions(W"xD"xH")
DSF94	94 1/2 x 31 1/2 x 53 9/16
Shelves	Voltage
3 Shelves	115V/60Hz
Temperature	Plug Type
39~45°F	Nema 5-15P
Refrigerant	Warranty (Years)
R290	2 Year & 5 Compressor



**Solid Door Chest Freezer 38"**

Model Number	Dimensions(W"xD"xH")
CHF-38	37 1/2 x 23 1/8 x 31 15/16
Capacity	Voltage
71 Cubic ft.	115V/60Hz
Temperature	Plug Type
-10~-0°F	Nema 5-15P
Refrigerant	Warranty (Years)
R290	2 Year & 5 Compressor



**Solid Door Chest Freezer 47"**

Model Number	Dimensions(W"xD"xH")
CHF-47	47 x 29 x 33 1/4
Capacity	Voltage
11 Cubic ft.	115V/60Hz
Temperature	Plug Type
-10~-0°F	Nema 5-15P
Refrigerant	Warranty (Years)
R290	2 Year & 5 Compressor



**Solid Door Chest Freezer 55"**

Model Number	Dimensions(W"xD"xH")
CHF-55	55 x 29 x 33 1/4
Capacity	Voltage
13.4 Cubic ft.	115V/60Hz
Temperature	Plug Type
-10~-0°F	Nema 5-15P
Refrigerant	Warranty (Years)
R290	2 Year & 5 Compressor



**Solid Door Chest Freezer 71"**

Model Number	Dimensions(W"xD"xH")
CHF-71	70 5/8 x 29 x 33 1/4
Capacity	Voltage
18.2 Cubic ft.	115V/60Hz
Temperature	Plug Type
-10~-0°F	Nema 5-15P
Refrigerant	Warranty (Years)
R290	2 Year & 5 Compressor



**Flat Door Chest Freezer 38"**

Model Number	Dimensions(W"xD"xH")
CHF-38OFG	37 1/2 x 23 1/8 x 31 15/16
Capacity	Voltage
71 Cubic ft.	115V/60Hz
Temperature	Plug Type
-10~-0°F	Nema 5-15P
Refrigerant	Warranty (Years)
R290	2 Year & 5 Compressor



**Flat Door Chest Freezer 47"**

Model Number	Dimensions(W"xD"xH")
CHF-47OFG	47 x 29 x 33 1/4
Capacity	Voltage
9.7 Cubic ft.	115V/60Hz
Temperature	Plug Type
-10~-0°F	Nema 5-15P
Refrigerant	Warranty (Years)
R290	2 Year & 5 Compressor



## Chest Freezers

# AmericanChef



### Flat Door Chest Freezer 55"

Model Number	Dimensions(W"xD"xH")
CHF-55OFG	55 x 29 x 33 1/4
Capacity	Voltage
11.8 Cubic ft.	115V/60Hz
Temperature	Plug Type
-10~-0°F	Nema 5-15P
Refrigerant	Warranty (Years)
R290	2 Year & 5 Compressor

### Flat Door Chest Freezer 71"

Model Number	Dimensions(W"xD"xH")
CHF-71OFG	70 5/8 x 29 x 33 1/4
Capacity	Voltage
16.1 Cubic ft.	115V/60Hz
Temperature	Plug Type
-10~-0°F	Nema 5-15P
Refrigerant	Warranty (Years)
R290	2 Year & 5 Compressor

### Curved Door Chest Freezer 38"

Model Number	Dimensions(W"xD"xH")
CHF-38OCG	37 1/2 x 23 1/8 x 31 15/16
Capacity	Voltage
7.1 Cubic ft.	115V/60Hz
Temperature	Plug Type
-10~-0°F	Nema 5-15P
Refrigerant	Warranty (Years)
R290	2 Year & 5 Compressor



### Curved Door Chest Freezer 47"

Model Number	Dimensions(W"xD"xH")
CHF-47OCG	47 x 29 x 33 1/4
Capacity	Voltage
9.7 Cubic ft.	115V/60Hz
Temperature	Plug Type
-10~-0°F	Nema 5-15P
Refrigerant	Warranty (Years)
R290	2 Year & 5 Compressor

### Curved Door Chest Freezer 55"

Model Number	Dimensions(W"xD"xH")
CHF-55OCG	55 x 29 x 33 1/4
Capacity	Voltage
11.8 Cubic ft.	115V/60Hz
Temperature	Plug Type
-10~-0°F	Nema 5-15P
Refrigerant	Warranty (Years)
R290	2 Year & 5 Compressor

### Curved Door Chest Freezer 71"

Model Number	Dimensions(W"xD"xH")
CHF-71OCG	70 5/8 x 29 x 33 1/4
Capacity	Voltage
16.1 Cubic ft.	115V/60Hz
Temperature	Plug Type
-10~-0°F	Nema 5-15P
Refrigerant	Warranty (Years)
R290	2 Year & 5 Compressor



**Pizza Prep Table 47"**

Model Number	Dimensions(W"xD"xH")
PR1-44S	47 3/8 x 32 1/4 x 41 5/16
Capacity	Voltage
12 Cubic ft.	115V/60Hz
Temperature	Plug Type
33~41°F	Nema 5-15P
Refrigerant	Warranty (Years)
R290	2 Year & 5 Compressor



**Pizza Prep Table 70"**

Model Number	Dimensions(W"xD"xH")
PR2-67S	70 3/4 x 32 1/4 x 41 5/16
Capacity	Voltage
22 Cubic ft.	115V/60Hz
Temperature	Plug Type
33~41°F	Nema 5-15P
Refrigerant	Warranty (Years)
R290	2 Year & 5 Compressor



**Pizza Prep Table 94"**

Model Number	Dimensions(W"xD"xH")
PR3-93S	94 3/16 x 32 1/4 x 41 5/16
Capacity	Voltage
32 Cubic ft.	115V/60Hz
Temperature	Plug Type
33~41°F	Nema 5-15P
Refrigerant	Warranty (Years)
R290	2 Year & 5 Compressor



**Pizza Prep Table 47" 2 Drawers**

Model Number	Dimensions(W"xD"xH")
PR1-44S2D	47 3/8 x 32 1/4 x 41 5/16
Capacity	Voltage
12 Cubic ft.	115V/60Hz
Temperature	Plug Type
33~41°F	Nema 5-15P
Refrigerant	Warranty (Years)
R290	2 Year & 5 Compressor



**Pizza Prep Table 70" 2 Drawers**

Model Number	Dimensions(W"xD"xH")
PR2-67S2D	70 3/4 x 32 1/4 x 41 5/16
Capacity	Voltage
22 Cubic ft.	115V/60Hz
Temperature	Plug Type
33~41°F	Nema 5-15P
Refrigerant	Warranty (Years)
R290	2 Year & 5 Compressor



**Pizza Prep Table 94" 2 Drawers**

Model Number	Dimensions(W"xD"xH")
PR3-93S2D	94 3/16 x 32 1/4 x 41 5/16
Capacity	Voltage
32 Cubic ft.	115V/60Hz
Temperature	Plug Type
33~41°F	Nema 5-15P
Refrigerant	Warranty (Years)
R290	2 Year & 5 Compressor



## Pizza & Sandwich Prep Tables

# AmericanChef



### Pizza Prep Table 94" 4 Drawers

Model Number	Dimensions(W"xD"xH")
PR3-93S4D	94 3/16 x 32 1/4 x 41 5/16
Capacity	Voltage
32 Cubic ft.	115V/60Hz
Temperature	Plug Type
33~41°F	Nema 5-15P
Refrigerant	Warranty (Years)
R290	\$270.44

### Pizza Prep Table 94" 6 Drawers

Model Number	Dimensions(W"xD"xH")
PR3-93S6D	94 3/16 x 32 1/4 x 41 5/16
Capacity	Voltage
32 Cubic ft.	115V/60Hz
Temperature	Plug Type
33~41°F	Nema 5-15P
Refrigerant	Warranty (Years)
R290	2 Year & 5 Compressor

### Sandwich Prep Cooler 29"

Model Number	Dimensions(W"xD"xH")
SR1-29S	29 x 30 x 43 3/16
Capacity	Voltage
7 Cubic ft.	115V/60Hz
Temperature	Plug Type
33~41°F	Nema 5-15P
Refrigerant	Warranty (Years)
R290	2 Year & 5 Compressor



### Sandwich Prep 29" 2 Drawer

Model Number	Dimensions(W"xD"xH")
SR1-29-2D	29 x 30 x 43 3/16
Capacity	Voltage
7 Cubic ft.	115V/60Hz
Temperature	Plug Type
33~41°F	Nema 5-15P
Refrigerant	Warranty (Years)
R290	R290

### Sandwich Prep Cooler 36"

Model Number	Dimensions(W"xD"xH")
SR2-36S	36 3/16 x 30 x 43 3/16
Capacity	Voltage
7.7 Cubic ft.	115V/60Hz
Temperature	Plug Type
33~41°F	Nema 5-15P
Refrigerant	Warranty (Years)
R290	2 Year & 5 Compressor

### Sandwich Prep Cooler 48"

Model Number	Dimensions(W"xD"xH")
SR2-48S	48 3/16 x 30 x 43 3/16
Capacity	Voltage
12 Cubic ft.	115V/60Hz
Temperature	Plug Type
33~41°F	Nema 5-15P
Refrigerant	Warranty (Years)
R290	2 Year & 5 Compressor



**Sandwich Prep 48" 2 Drawer**

Model Number	Dimensions(W"xD"xH")
SR2-48-2D	48 3/16 x 30 x 43 3/16
Capacity	Voltage
12 Cubic ft.	115V/60Hz
Temperature	Plug Type
33~41°F	Nema 5-15P
Refrigerant	Warranty (Years)
R290	2 Year & 5 Compressor



**Sandwich Prep 48" 4 Drawer**

Model Number	Dimensions(W"xD"xH")
SR2-48-4D	48 3/16 x 30 x 43 3/16
Capacity	Voltage
12 Cubic ft.	115V/60Hz
Temperature	Plug Type
33~41°F	Nema 5-15P
Refrigerant	Warranty (Years)
R290	2 Year & 5 Compressor



**Sandwich Prep 60"**

Model Number	Dimensions(W"xD"xH")
SR2-60	61 3/16 x 30 x 43 3/16
Capacity	Voltage
15.5 Cubic ft.	115V/60Hz
Temperature	Plug Type
33~41°F	Nema 5-15P
Refrigerant	Warranty (Years)
R290	2 Year & 5 Compressor



**Sandwich Prep 60" 2 Drawer**

Model Number	Dimensions(W"xD"xH")
SR2-60-2D	61 3/16 x 30 x 43 3/16
Capacity	Voltage
15.5 Cubic ft.	115V/60Hz
Temperature	Plug Type
33~41°F	Nema 5-15P
Refrigerant	Warranty (Years)
R290	2 Year & 5 Compressor



**Sandwich Prep 60" 4 Drawer**

Model Number	Dimensions(W"xD"xH")
SR2-60-4D	61 3/16 x 30 x 43 3/16
Capacity	Voltage
15.5 Cubic ft.	115V/60Hz
Temperature	Plug Type
33~41°F	Nema 5-15P
Refrigerant	Warranty (Years)
R290	2 Year & 5 Compressor



**Sandwich Prep 72"**

Model Number	Dimensions(W"xD"xH")
SR3-72S	71 3/4 x 30 x 43 3/16
Capacity	Voltage
18 Cubic ft.	115V/60Hz
Temperature	Plug Type
33~41°F	Nema 5-15P
Refrigerant	Warranty (Years)
R290	2 Year & 5 Compressor



## Mega Top Prep Coolers

**AmericanChef**



### Mega Top Prep Cooler 29"

Model Number	Dimensions(W"xD"xH")
SR1-29M	29 x 34 1/2 x 43 3/16
Capacity	Voltage
7 Cubic ft.	115V/60Hz
Temperature	Plug Type
33~41°F	Nema 5-15P
Refrigerant	Warranty (Years)
R290	2 Year & 5 Compressor



### Mega Top Prep Cooler 36"

Model Number	Dimensions(W"xD"xH")
SR1-36M	36 3/16 x 34 1/2 x 43 3/16
Capacity	Voltage
7.7 Cubic ft.	115V/60Hz
Temperature	Plug Type
33~41°F	Nema 5-15P
Refrigerant	Warranty (Years)
R290	2 Year & 5 Compressor



### Mega Top Prep Cooler 48"

Model Number	Dimensions(W"xD"xH")
SR2-48M	48 3/16 x 34 1/2 x 43 3/16
Capacity	Voltage
12 Cubic ft.	115V/60Hz
Temperature	Plug Type
33~41°F	Nema 5-15P
Refrigerant	Warranty (Years)
R290	2 Year & 5 Compressor



### Mega Top Prep Cooler 60"

Model Number	Dimensions(W"xD"xH")
SR2-60M	61 3/16 x 34 1/2 x 43 3/16
Capacity	Voltage
15.5 Cubic ft.	115V/60Hz
Temperature	Plug Type
33~41°F	Nema 5-15P
Refrigerant	Warranty (Years)
R290	2 Year & 5 Compressor



### Mega Top Prep Cooler 72"

Model Number	Dimensions(W"xD"xH")
SR3-72M	71 3/4 x 34 1/2 x 43 3/16
Capacity	Voltage
18 Cubic ft.	115V/60Hz
Temperature	Plug Type
33~41°F	Nema 5-15P
Refrigerant	Warranty (Years)
R290	2 Year & 5 Compressor



### Glass Reach-in Freezer 27"

Model Number	Dimensions(W"xD"xH")
F1G-27	26 3/4 x 31 7/8 x 82 5/16
Capacity	Voltage
23 Cubic ft.	115V/60Hz
Temperature	Plug Type
-10°F	Nema 5-15P
Refrigerant	Warranty (Years)
R290	2 Year & 5 Compressor

### Glass Reach-in Freezer 27"

Model Number	Dimensions(W"xD"xH")
F1G-27-WS	26 3/4 x 31 7/8 x 79 1/2
Capacity	Voltage
23 Cubic ft.	115V/60Hz
Temperature	Plug Type
-10~0°F	Nema 5-15P
Refrigerant	Warranty (Years)
R290	2 Year & 5 Compressor

### Glass Reach-in Freezer 27"

Model Number	Dimensions(W"xD"xH")
F1G-27B	26 3/4 x 31 7/8 x 79 1/2
Capacity	Voltage
23 Cubic ft.	115V/60Hz
Temperature	Plug Type
-10~0°F	Nema 5-15P
Refrigerant	Warranty (Years)
R290	2 Year & 5 Compressor



### Glass Reach-in Freezer 54"

Model Number	Dimensions(W"xD"xH")
F2G-54	53 15/16 x 31 7/8 x 82 5/16
Capacity	Voltage
49 Cubic ft.	115V/60Hz
Temperature	Plug Type
-10°F	Nema 5-15P
Refrigerant	Warranty (Years)
R290	2 Year & 5 Compressor

### Glass Reach-in Freezer 54"

Model Number	Dimensions(W"xD"xH")
F2G-54-WS	53 15/16 x 31 7/8 x 79 1/2
Capacity	Voltage
48 Cubic ft.	115V/60Hz
Temperature	Plug Type
-10~0°F	Nema 5-15P
Refrigerant	Warranty (Years)
R290	2 Year & 5 Compressor

### Glass Reach-in Freezer 54"

Model Number	Dimensions(W"xD"xH")
F2G-54B	53 15/16 x 31 7/8 x 79 1/2
Capacity	Voltage
48 Cubic ft.	115V/60Hz
Temperature	Plug Type
-10~0°F	Nema 5-15P
Refrigerant	Warranty (Years)
R290	2 Year & 5 Compressor

## Glass Reach-in Coolers

# AmericanChef



### Glass Reach-in Cooler 27"

Model Number	Dimensions(W"xD"xH")
R1G-27	26 3/4 x 31 7/8 x 82 5/16
Capacity	Voltage
23 Cubic ft.	115V/60Hz
Temperature	Plug Type
33~41°F	Nema 5-15P
Refrigerant	Warranty (Years)
R290	2 Year & 5 Compressor

### Glass Reach-in Cooler 27"

Model Number	Dimensions(W"xD"xH")
R1G-27-WS	26 3/4 x 31 7/8 x 79 1/2
Capacity	Voltage
23 Cubic ft.	115V/60Hz
Temperature	Plug Type
33~41°F	Nema 5-15P
Refrigerant	Warranty (Years)
R290	2 Year & 5 Compressor

### Glass Reach-in Cooler 27"

Model Number	Dimensions(W"xD"xH")
R1G-27B	26 3/4 x 31 7/8 x 79 1/2
Capacity	Voltage
23 Cubic ft.	115V/60Hz
Temperature	Plug Type
33~41°F	Nema 5-15P
Refrigerant	Warranty (Years)
R290	2 Year & 5 Compressor



### Glass Reach-in Cooler 54"

Model Number	Dimensions(W"xD"xH")
R2G-54	53 15/16 x 31 7/8 x 82 5/16
Capacity	Voltage
49 Cubic ft.	115V/60Hz
Temperature	Plug Type
33~41°F	Nema 5-15P
Refrigerant	Warranty (Years)
R290	2 Year & 5 Compressor

### Glass Reach-in Cooler 54"

Model Number	Dimensions(W"xD"xH")
R2G-54-WS	53 15/16 x 31 7/8 x 79 1/2
Capacity	Voltage
48 Cubic ft.	115V/60Hz
Temperature	Plug Type
33~41°F	Nema 5-15P
Refrigerant	Warranty (Years)
R290	2 Year & 5 Compressor

### Glass Reach-in Cooler 54"

Model Number	Dimensions(W"xD"xH")
R2G-54B	53 15/16 x 31 7/8 x 79 1/2
Capacity	Voltage
48 Cubic ft.	115V/60Hz
Temperature	Plug Type
33~41°F	Nema 5-15P
Refrigerant	Warranty (Years)
R290	2 Year & 5 Compressor





**Reach-in Cooler 27"**

Model Number	Dimensions(W"xD"xH")
R1S-27	26 3/4 x 32 11/16 x 82 5/16
Capacity	Voltage
23 Cubic ft.	115V/60Hz
Temperature	Plug Type
33~41°F	Nema 5-15P
Refrigerant	Warranty (Years)
R290	2 Year & 5 Compressor



**Reach-in Cooler 54"**

Model Number	Dimensions(W"xD"xH")
R2S-54	54 x 32 11/16 x 82 5/16
Capacity	Voltage
49 Cubic ft.	115V/60Hz
Temperature	Plug Type
33~41°F	Nema 5-15P
Refrigerant	Warranty (Years)
R290	2 Year & 5 Compressor



**Reach-in Cooler 81"**

Model Number	Dimensions(W"xD"xH")
R3S-81	81 x 32 11/16 x 82 5/16
Capacity	Voltage
72 Cubic ft.	115V/60Hz
Temperature	Plug Type
33~41°F	Nema 5-15P
Refrigerant	Warranty (Years)
R290	2 Year & 5 Compressor



**Reach-in Freezer 27"**

Model Number	Dimensions(W"xD"xH")
F1S-27	26 3/4 x 32 11/16 x 82 5/16
Capacity	Voltage
23 Cubic ft.	115V/60Hz
Temperature	Plug Type
-10°F	Nema 5-15P
Refrigerant	Warranty (Years)
R290	2 Year & 5 Compressor



**Reach-in Freezer 54"**

Model Number	Dimensions(W"xD"xH")
F2S-54	54 x 32 11/16 x 82 5/16
Capacity	Voltage
49 Cubic ft.	115V/60Hz
Temperature	Plug Type
-10°F	Nema 5-15P
Refrigerant	Warranty (Years)
R290	2 Year & 5 Compressor



**Reach-in Freezer 81"**

Model Number	Dimensions(W"xD"xH")
F3S-81	81 x 32 11/16 x 82 5/16
Capacity	Voltage
72 Cubic ft.	115V/60Hz
Temperature	Plug Type
-10°F	Nema L14-20P
Refrigerant	Warranty (Years)
R290	2 Year & 5 Compressor

## Under Counter Coolers

**AmericanChef**



### Under Counter Cooler 28"

Model Number	Dimensions(W"xD"xH")
RUC1-28S	27 3/4 x 29 15/16 x 35 1/2
Capacity	Voltage
6.5 Cubic ft.	115V/60Hz
Temperature	Plug Type
33~41°F	Nema 5-15P
Refrigerant	Warranty (Years)
R290	2 Year & 5 Compressor



### Under Counter Cooler 48"

Model Number	Dimensions(W"xD"xH")
RUC2-48S	48 1/4 x 29 15/16 x 35 1/2
Capacity	Voltage
12 Cubic ft.	115V/60Hz
Temperature	Plug Type
33~41°F	Nema 5-15P
Refrigerant	Warranty (Years)
R290	2 Year & 5 Compressor



### Under Counter Cooler 48" 2 Drawers

Model Number	Dimensions(W"xD"xH")
RUC2-48S2D	48 1/4 x 29 15/16 x 35 1/2
Capacity	Voltage
12 Cubic ft.	115V/60Hz
Temperature	Plug Type
33~41°F	Nema 5-15P
Refrigerant	Warranty (Years)
R290	2 Year & 5 Compressor



### Under Counter Cooler 60"

Model Number	Dimensions(W"xD"xH")
RUC2-60S	61 1/4 x 29 15/16 x 35 1/2
Capacity	Voltage
15.5 Cubic ft.	115V/60Hz
Temperature	Plug Type
33~41°F	Nema 5-15P
Refrigerant	Warranty (Years)
R290	2 Year & 5 Compressor



### Under Counter 60" 2 Drawers

Model Number	Dimensions(W"xD"xH")
RUC2-60S2D	61 1/4 x 29 15/16 x 35 1/2
Capacity	Voltage
15.5 Cubic ft.	115V/60Hz
Temperature	Plug Type
33~41°F	Nema 5-15P
Refrigerant	Warranty (Years)
R290	2 Year & 5 Compressor



### Under Counter Cooler 72"

Model Number	Dimensions(W"xD"xH")
RUC3-72S	71 3/4 x 29 15/16 x 35 1/2
Capacity	Voltage
18 Cubic ft.	115V/60Hz
Temperature	Plug Type
33~41°F	Nema 5-15P
Refrigerant	Warranty (Years)
R290	2 Year & 5 Compressor



### Under Counter Freezer 28"

Model Number	Dimensions(W"xD"xH")
FUC1-28S	27 3/4 x 29 15/16 x 35 1/2
Capacity	Voltage
6.5 Cubic ft.	115V/60Hz
Temperature	Plug Type
-10~-10°F	Nema 5-15P
Refrigerant	Warranty (Years)
R290	2 & 5 year Compressor

### Under Counter Freezer 48"

Model Number	Dimensions(W"xD"xH")
FUC2-48S	48 1/4 x 29 15/16 x 35 1/2
Capacity	Voltage
12 Cubic ft.	115V/60Hz
Temperature	Plug Type
-10~-10°F	Nema 5-15P
Refrigerant	Warranty (Years)
R290	2 Year & 5 Compressor

### Under Counter Freezer 60"

Model Number	Dimensions(W"xD"xH")
FUC2-60S	61 1/4 x 29 15/16 x 35 1/2
Capacity	Voltage
15.5 Cubic ft.	115V/60Hz
Temperature	Plug Type
-10~-10°F	Nema 5-15P
Refrigerant	Warranty (Years)
R290	2 Year & 5 Compressor

WORK TOP  
UNDER  
COUNTERS



### Under Counter Freezer 72"

Model Number	Dimensions(W"xD"xH")
FUC3-72S	71 3/4 x 29 15/16 x 35 1/2
Capacity	Voltage
18 Cubic ft.	115V/60Hz
Temperature	Plug Type
-10~-10°F	Nema 5-15P
Refrigerant	Warranty (Years)
R290	2 Year & 5 Compressor



## Mixers

AmericanChef



**Food Mixer 7 qt**

Model Number	Dimensions(W"xD"xH")
MP-7	16.5x9.4x16.7
Capacity	Voltage
1.20kg	120V/60Hz/1 Nema 5-15P
Power/HP	Transmission
280w/0.38hp/2.3 Amp	Gear Drive
Flour Capacity	Warranty (Year)
3.3lbs (1.5kg)	1 Year Parts & Labor



**Planetary Mixer 10 qt**

Model Number	Dimensions(W"xD"xH")
MP-10	15.6x15.6x24
Capacity	Voltage
3.2kg	120V/60Hz/1 Nema 5-15P
Power/HP	Transmission
550w/1hp/ 4.5 Amp	Gear Drive
Flour Capacity	Warranty (Year)
4.5lbs (2kg)	1 Year Parts & Labor



**Planetary Mixer 20 qt**

Model Number	Dimensions(W"xD"xH")
MP-20	21.9x22x31.3
Capacity	Voltage
8kg	120V/60Hz/1 Nema 5-15P
Power/HP	Transmission
1100w/1.5hp/9.1 Amp	Gear Drive
Flour Capacity	Warranty (Year)
10lbs (5kg)	1 Year Parts & Labor



**Planetary Mixer 30 qt**

Model Number	Dimensions(W"xD"xH")
MP-30	22.8x24x44.9
Capacity	Voltage
11.3kg	120V/60Hz/1 Nema 5-15P
Power/HP	Transmission
1500w/2.0hp/12.5 Amp	Gear Drive
Flour Capacity	Warranty (Year)
13.2lbs (6kg)	1 Year Parts & Labor



**Planetary Mixer 40 qt**

Model Number	Dimensions(W"xD"xH")
MP-40	22.8x24x44.9
Capacity	Voltage
15kg	120V/60Hz/1 Nema 5-15P
Power/HP	Transmission
2200w/3.0hp/18.3 Amp	Gear Drive
Flour Capacity	Warranty (Year)
21lbs (9.5kg)	1 Year Parts & Labor



**Planetary Mixer 60 qt**

Model Number	Dimensions(W"xD"xH")
MP-60	41.3x27.6x57.3
Capacity	Voltage
24kg	380V/50HZ/3 or custom Ph Hardwired
Power/HP	Transmission
3000w/4.0hp/8.68Amp	Gear Drive
Flour Capacity	Warranty (Year)
33lbs (15kg)	1 Year Parts & Labor



# Warranty Terms and Conditions

## Customer's Freight Damage Procedure

- 1. Inspect Shipment for Damage:** Upon delivery, carefully inspect the shipment for any visible signs of damage. This includes checking the outer packaging for dents, tears, or other indications of mishandling.
- 2. Mark Freight Bill "Damaged":** If any damage is observed, clearly mark the freight bill as "damaged" before signing it.
- 3. Notify Carrier Within 48 Hours:** Report any damages to the carrier within 48 hours of receipt to initiate the claims process.
- 4. File Freight Claim and Schedule Inspection:** File a freight claim with the carrier and schedule an inspection of the damaged goods. Provide the carrier with all necessary documentation.
- 5. Note Condition on Freight Bill and Sign:** Accurately note the condition of the shipment on the freight bill and ensure it is signed by the delivery personnel as proof of damage at the time of delivery.
- 6. Request Inspection Report:** Obtain an inspection report from the carrier's representative to document the extent of the damage.
- 7. Retain All Cartons and Merchandise:** Retain all original cartons, packaging materials, and damaged merchandise until the freight claim is resolved and you receive further instructions.

## Two (2) Year Parts and Labor Warranty

- 1. Coverage:** This warranty covers defects in material and workmanship under normal use and maintenance, including mechanical and electrical components.
- 2. Warranty Period:** The warranty period is two years from the date of purchase or 28 months from the date of shipment from our facility, whichever comes first.
- 3. Exclusions:** This warranty does not cover normal wear parts such as bulbs, gaskets, fuses, and handles. It also excludes damages caused by misuse, abuse, or unauthorized modifications.
- 4. Labor Warranty:** The labor warranty covers repair services for self-contained units during normal working hours (8 AM - 5 PM, Monday to Friday). After-hours service, holiday service, and overtime are not covered.
- 5. Remote Locations:** Coverage in remote locations is limited. Travel time covered is up to 50 kilometers from the nearest authorized service provider. Additional travel expenses may apply for farther distances.
- 6. Improper Operation:** Issues arising from improper operation, such as lack of regular cleaning, incorrect voltage, or installation not in accordance with provided instructions, are not covered by this warranty.

## Additional Three (3) Year Compressor Part Warranty

- 1. Coverage:** This warranty extends the coverage for the compressor part only for an additional three years beyond the initial two-year warranty period, totaling five years of compressor coverage.
- 2. Exclusions:** This warranty does not cover freight charges, electrical controls, labor charges, or any other associated costs related to the compressor repair or replacement.
- 3. Operating Conditions:** The unit must be installed in a level and stationary position. This warranty excludes mobile units or any unit subject to movement during operation.

## Limitation of Liability

- 1. Liability:** American Chef will not be liable for any indirect, incidental, special, or consequential damages, including but not limited to, loss of revenue, profit, or data, or other financial loss arising out of or in connection with the use or inability to use the product.
- 2. Exclusive Remedy:** The exclusive remedy under this warranty is the repair or replacement of defective parts, as determined by American Chef.
- 3. Non-Assignable:** This warranty is for the original purchaser only and is non-assignable. Proof of purchase may be required for warranty claims.
- 4. Geographic Limits:** This warranty is valid only in the USA and Canada. Claims outside these regions are not covered.
- 5. Disclaimers:** Any other warranties, whether express or implied, including but not limited to, implied warranties of merchantability and fitness for a particular purpose, are disclaimed to the fullest extent permitted by law.

## Exclusions from Claims

- No Consequential Damages:** This warranty does not cover any consequential damages, including loss of sales, spoilage of products, or any other indirect losses resulting from the failure of the equipment.
- American Chef's warranty does not cover any products that are used in mobile kitchens, including food trucks and trailers.** This exclusion applies to all parts and components subjected to the unique conditions and stresses of mobile environments.

## Special Note

Changes: Specifications, terms, and conditions are subject to change without notice. American Chef reserves the right to make changes to the design and functionality of its products without obligation to retrofit previously sold units.



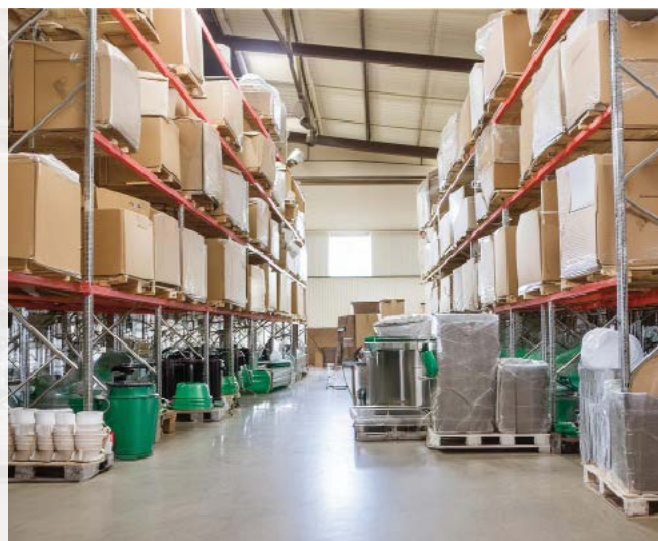


## About American Chef

# AmericanChef

At American Chef, quality is our top priority. Our commercial foodservice equipment is designed to meet and exceed industry standards for safety, quality, reliability, and sanitation. Crafted to endure the rigorous demands of daily use, our products promise long-lasting performance. We stand behind every item we sell with confidence.

Our core philosophy revolves around Value, Quality, and Service. These principles are the foundation of everything we do at American Chef. Every product we manufacture is a testament to this commitment. Below, you will find descriptions of the quality and safety certifications our products carry, along with information about the organizations that validate these standards.



### Intertek

Intertek is a global leader employing over 33,000 people in 100 countries, providing product testing and certification services across various industries, including food service. Key accreditations in our industry include:

### ETL Listing

The ETL Listed Mark indicates compliance with North American safety standards for electrical, gas, and other safety criteria. Recognized by authorities in 50 states and Canada, the ETL Listed Mark is trusted by major retailers and featured on millions of products.



### NSF

International certifies products and establishes safety standards for food, water, and consumer goods. As an independent not-for-profit organization, NSF is dedicated to ongoing public health and safety. Collaborating with ANSI (American National Standards Institute), NSF has developed numerous health and safety standards utilized in the foodservice industry.

### ETL Sanitation

This certification signifies that products have been tested by Intertek to meet ANSI/NSF standards for national sanitation requirements. It assures that products are safe for use in food production.





# AmericanChef



1-866-450-CHEF



[info@americanchef.ca](mailto:info@americanchef.ca)



[www.americanchef.ca](http://www.americanchef.ca)

121 McLean Drive,  
Vancouver, BC, V5L 5E7

